



DEA No. RA0571996
FL License # CMTL-0003
CLIA No. 10D1094068

Certificate of Analysis

Compliance Test

Laurelcrest Labs
2800 Pringle Rd. SE
#160
Salem, OR 97302

Batch # BK-22-124
Batch Date: 2022-11-10
Extracted From: Industrial Hemp

Test Reg State: Florida

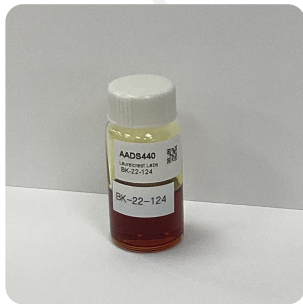
Production Facility: Laurelcrest Labs
Production Date: 2022-11-10

Order # LAU221111-080001
Order Date: 2022-11-11
Sample # AADS440

Sampling Date: 2022-11-17
Lab Batch Date: 2022-11-17
Completion Date: 2022-11-19

Initial Gross Weight: 27.981 g
Net Weight: 10.381 g

Number of Units: 1
Net Weight per Unit: 10381.000 mg



Potency
Tested

Product Image

Potency 23 (LCUV) Tested
Specimen Weight: 54.380 mg SOP13.002 (LCUV)

Analyte	Dilution (1:n)	LOD (%)	LOQ (%)	Result (mg/g)	(%)
CBD	1000.000	5.40E-5	0.0015	484.8000	48.4800
CBT	100.000	2.00E-4	0.0015	56.8900	5.6890
CBC	100.000	1.80E-5	0.0015	48.1900	4.8190
CBN	100.000	1.40E-5	0.0015	27.8300	2.7830
CBG	10.000	2.48E-4	0.0015	10.9000	1.0900
CBDV	10.000	6.50E-5	0.0015	8.3540	0.8354
CBL	10.000	3.50E-5	0.0015	6.1690	0.6169
CBCA	10.000	1.07E-4	0.0015	<LOQ	<LOQ
CBDA	10.000	1.00E-5	0.0015	<LOQ	<LOQ
CBDVA	10.000	1.40E-5	0.0015	<LOQ	<LOQ
CBGA	10.000	8.00E-5	0.0015	<LOQ	<LOQ
CBNA	10.000	9.50E-5	0.0015	<LOQ	<LOQ
Delta-8 THC	10.000	2.60E-5	0.0015	<LOQ	<LOQ
Delta-8 THC-O Acetate	10.000	2.70E-5	0.0003	<LOQ	<LOQ
Delta-8 THCV	10.000	4.00E-5	0.0015	<LOQ	<LOQ
Delta-9 THC	10.000	1.30E-5	0.0015	<LOQ	<LOQ
Delta-9 THC-O Acetate	10.000	7.70E-5	0.0003	<LOQ	<LOQ
Delta8-THCP	10.000	3.75E-4	0.0015	<LOQ	<LOQ
Delta9-THCP	10.000	1.17E-5	0.0012	<LOQ	<LOQ
Exo-THC	10.000	2.30E-4	0.0015	<LOQ	<LOQ
THCA-A	10.000	3.20E-5	0.0015	<LOQ	<LOQ
THCV	10.000	7.00E-6	0.0015	<LOQ	<LOQ
THCVA	10.000	4.70E-5	0.0015	<LOQ	<LOQ

Potency Summary

Total Active THC None Detected	Total Active CBD 48.480%	5,032.710mg
Total CBG 1.090%	113.150mg	Total CBN 2.783%
288.900mg	Total Cannabinoids 64.313%	6,676.330mg
Other Cannabinoids 11.960%	1,241.570mg	

Xueli Gao
Ph.D., DABT
Lab Toxicologist

Aixia Sun
D.H.Sc., M.Sc., B.Sc., MT (AAB)
Lab Director/Principal Scientist



Definitions and Abbreviations used in this report: Total Active CBD = CBD + (CBD-A * 0.877), *Total CBDV = CBDV + (CBDVA * 0.87), Total Active THC = THCA-A * 0.877 + Delta 9 THC, Total THCV = THCV + (THCVA * 0.87), CBG Total = (CBGA * 0.877) + CBG, CBN Total = (CBNA * 0.877) + CBN, Total CBC = CBC + (CBCA * 0.877), Total THC-O-Acetate = Delta 8 THC-O-Acetate + Delta 9 THC-O-Acetate, Other Cannabinoids Total = Total Cannabinoids - All the listed cannabinoids on the summary section, Total Detected Cannabinoids = Delta8a10a-THC + Delta8-THC + Total CBN + CBT + Delta8-THCV + Total CBG + Total CBD + Total THCV + CBL + Total THC + Total CBC + Total CBDV + Delta10-THC + Total THC-O-Acetate, Analyte Details above show the Dry Weight Concentrations unless specified as 12% moisture concentration. (mg/ml) = Milligrams per Milliliter, LOQ = Limit of Quantitation, LOD = Limit of Detection, Dilution = Dilution Factor (ppb) = Parts per Billion, (%) = Percent, (cfu/g) = Colony Forming Unit per Gram (cfu/g) = Colony Forming Unit per Gram, LOD = Limit of Detection, (µg/g) = Microgram per Gram (ppm) = Parts per Million, (ppm) = (µg/g), (aw) = aw (area ratio) = Area Ratio, (mg/Kg) = Milligram per Kilogram, *Measurement of Uncertainty = +/- 10%

This report shall not be reproduced, without written approval, from ACS Laboratory. The results of this report relate only to the material or product analyzed. Test results are confidential unless explicitly waived otherwise. Accredited by a third-party accrediting body as a competent testing laboratory pursuant to ISO/IEC 17025 of the International Organization for Standardization.