



DEA No. RA0571996
FL License # CMTL-0003
CLIA No. 10D1094068

Certificate of Analysis

Compliance Test

Laurelcrest Labs
2800 Pringle Rd. SE
#160
Salem, OR 97302

Batch # BK-22-140
Batch Date: 2022-12-06
Extracted From: Industrial Hemp

Test Reg State: Florida

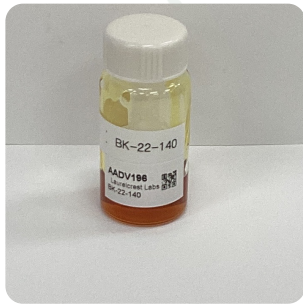
Production Facility: Laurelcrest Labs
Production Date: 2022-12-06

Lab Note: Potency Panel Updated

Order # LAU221206-040001
Order Date: 2022-12-06
Sample # AADV196

Sampling Date: 2022-12-07
Lab Batch Date: 2022-12-07
Completion Date: 2022-12-12

Initial Gross Weight: 24.135 g



Product Image

Potency Tested

Potency 23 (LCUV)

Specimen Weight: 51.510 mg

Tested

SOP13.002 (LCUV)

Potency Summary

Analyte	Dilution (1:n)	LOD (%)	LOQ (%)	Result (mg/g)	(%)
CBD	1000.000	5.40E-5	0.0015	463.8000	46.3800
CBT	100.000	2.00E-4	0.0015	111.9000	11.1900
CBN	100.000	1.40E-5	0.0015	47.1900	4.7190
CBC	10.000	1.80E-5	0.0015	12.0700	1.2070
CBG	10.000	2.48E-4	0.0015	7.8040	0.7804
CBDV	10.000	6.50E-5	0.0015	6.3250	0.6325
CBL	10.000	3.50E-5	0.0015	6.0630	0.6063
Delta-8 THC	10.000	4.00E-5	0.0015	1.0300	0.1030
CBGA	10.000	8.00E-5	0.0015	0.7790	0.0779
CBCA	10.000	1.07E-4	0.0015	<LOQ	<LOQ
CBDA	10.000	1.00E-5	0.0015	<LOQ	<LOQ
CBDVA	10.000	1.40E-5	0.0015	<LOQ	<LOQ
CBNA	10.000	9.50E-5	0.0015	<LOQ	<LOQ
Delta-8 THC	10.000	2.60E-5	0.0015	<LOQ	<LOQ
Delta-8 THC-O Acetate	10.000	2.70E-5	0.0003	<LOQ	<LOQ
Delta-9 THC	10.000	1.30E-5	0.0015	<LOQ	<LOQ
Delta8-THCP	10.000	3.75E-4	0.0015	<LOQ	<LOQ
Delta9-THCP	10.000	1.17E-5	0.0012	<LOQ	<LOQ
Exo-THC	10.000	2.30E-4	0.0015	<LOQ	<LOQ
THCA-A	10.000	3.20E-5	0.0015	<LOQ	<LOQ
THCV	10.000	7.00E-6	0.0015	<LOQ	<LOQ
THCVA	10.000	4.70E-5	0.0015	<LOQ	<LOQ

Total Active THC None Detected	Total Active CBD 46.380%	<LOQ
Total CBG 0.849%	Total CBN 4.719%	<LOQ
Other Cannabinoids 13.739%	Total Cannabinoids 65.687%	<LOQ

Xueli Gao Lab Toxicologist
Ph.D., DABT

Aixia Sun Lab Director/Principal Scientist
D.H.Sc., M.Sc., B.Sc., MT (AAB)



Definitions and Abbreviations used in this report: Total Active CBD = CBD + (CBD-A * 0.877), *Total CBDV = CBDV + (CBDVA * 0.87), Total Active THC = THCA-A * 0.877 + Delta 9 THC, Total THCV = THCV + (THCVA * 0.87), CBG Total = (CBGA * 0.877) + CBG, CBN Total = (CBNA * 0.877) + CBN, Total CBC = CBC + (CBCA * 0.877), Total THC-O-Acetate = Delta 8 THC-O-Acetate + Delta 9 THC-O-Acetate, Other Cannabinoids Total = Total Cannabinoids - All the listed cannabinoids on the summary section, Total Detected Cannabinoids = Delta6a10a-THC + Delta8-THC + Total CBN + CBT + Delta8-THCV + Total CBG + Total CBD + Total THCV + CBL + Total THC + Total CBC + Total CBDV + Delta10-THC + Total THC-O-Acetate, Analyte Details above show the Dry Weight Concentrations unless specified as 12% moisture concentration. (mg/ml) = Milligrams per Milliliter, LOQ = Limit of Quantitation, LOD = Limit of Detection, Dilution = Dilution Factor (ppb) = Parts per Billion, (%) = Percent, (cfu/g) = Colony Forming Unit per Gram (cfu/g) = Colony Forming Unit per Gram, , LOD = Limit of Detection, (µg/g) = Microgram per Gram (ppm) = Parts per Million, (ppm) = (µg/g), (aw) = aw (area ratio) = Area Ratio, (mg/Kg) = Milligram per Kilogram, *Measurement of Uncertainty = +/- 10%

This report shall not be reproduced, without written approval, from ACS Laboratory. The results of this report relate only to the material or product analyzed. Test results are confidential unless explicitly waived otherwise. ACS Laboratory is accredited to the ISO/IEC 17025:2017 Standard.