



DEA No. RA0571996  
FL License # CMTL-0003  
CLIA No. 10D1094068

# Certificate of Analysis

Compliance Test

**Laurelcrest Labs**  
2800 Pringle Rd. SE  
#160  
Salem, OR 97302

Batch # BK-22-108  
Batch Date: 2022-10-17  
Extracted From: Industrial Hemp

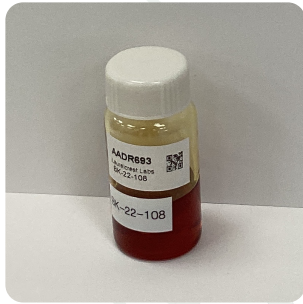
Test Reg State: Florida

Production Facility: Laurelcrest Labs  
Production Date: 2022-10-17

Order # LAU221107-050001  
Order Date: 2022-11-07  
Sample # AADR693

Sampling Date: 2022-11-09  
Lab Batch Date: 2022-11-09  
Completion Date: 2022-11-14

Initial Gross Weight: 27.821 g



Potency Tested

Product Image

**Potency 21 (LCUV)**  
Specimen Weight: 45.620 mg

**Tested**  
SOP13.002 (LCUV)

| Analyte               | Dilution (1:n) | LOD (%) | LOQ (%) | Result (mg/g) | (%)     |
|-----------------------|----------------|---------|---------|---------------|---------|
| CBD                   | 1000.000       | 5.40E-5 | 0.0015  | 511.9000      | 51.1900 |
| CBT                   | 100.000        | 2.00E-4 | 0.0015  | 44.0000       | 4.4000  |
| CBC                   | 100.000        | 1.80E-5 | 0.0015  | 35.2000       | 3.5200  |
| CBN                   | 100.000        | 1.40E-5 | 0.0015  | 26.2100       | 2.6210  |
| CBG                   | 10.000         | 2.48E-4 | 0.0015  | 14.2600       | 1.4260  |
| CBL                   | 10.000         | 3.50E-5 | 0.0015  | 5.6960        | 0.5696  |
| CBDV                  | 10.000         | 6.50E-5 | 0.0015  | 4.6710        | 0.4671  |
| CBDA                  | 10.000         | 1.00E-5 | 0.0015  | 0.6210        | 0.0621  |
| CBCA                  | 10.000         | 1.07E-4 | 0.0015  | <LOQ          | <LOQ    |
| CBDVA                 | 10.000         | 1.40E-5 | 0.0015  | <LOQ          | <LOQ    |
| CBGA                  | 10.000         | 8.00E-5 | 0.0015  | <LOQ          | <LOQ    |
| CBNA                  | 10.000         | 9.50E-5 | 0.0015  | <LOQ          | <LOQ    |
| Delta-8 THC           | 10.000         | 2.60E-5 | 0.0015  | <LOQ          | <LOQ    |
| Delta-8 THC-O Acetate | 10.000         | 2.70E-5 | 0.0003  | <LOQ          | <LOQ    |
| Delta-8 THCv          | 10.000         | 4.00E-5 | 0.0015  | <LOQ          | <LOQ    |
| Delta-9 THC           | 10.000         | 1.30E-5 | 0.0015  | <LOQ          | <LOQ    |
| Delta-9 THC-O Acetate | 10.000         | 7.70E-5 | 0.0003  | <LOQ          | <LOQ    |
| Exo-THC               | 10.000         | 2.30E-4 | 0.0015  | <LOQ          | <LOQ    |
| THCA-A                | 10.000         | 3.20E-5 | 0.0015  | <LOQ          | <LOQ    |
| THCV                  | 10.000         | 7.00E-6 | 0.0015  | <LOQ          | <LOQ    |
| THCVA                 | 10.000         | 4.70E-5 | 0.0015  | <LOQ          | <LOQ    |

**Potency Summary**

|  |   |
|--|---|
| <b>Total Active THC</b><br>None Detected   | <b>Total Active CBD</b><br>51.244% <LOQmg   |
| <b>Total CBG</b><br>1.426% <LOQmg          | <b>Total CBN</b><br>2.621% <LOQmg           |
| <b>Other Cannabinoids</b><br>8.957% <LOQmg | <b>Total Cannabinoids</b><br>64.248% <LOQmg |

Xueli Gao  
Ph.D., DABT  
Lab Toxicologist

Aixia Sun  
D.H.Sc., M.Sc., B.Sc., MT (AAB)  
Lab Director/Principal Scientist



Definitions and Abbreviations used in this report: Total Active CBD = CBD + (CBD-A \* 0.877), \*Total CBDV = CBDV + (CBDVA \* 0.87), Total Active THC = THCA-A \* 0.877 + Delta 9 THC, Total THCv = THCV + (THCVA \* 0.87), CBG Total = (CBGA \* 0.877) + CBG, CBN Total = (CBNA \* 0.877) + CBN, Total CBC = CBC + (CBCA \* 0.877), Total THC-O-Acetate = Delta 8 THC-O-Acetate + Delta 9 THC-O-Acetate, Other Cannabinoids Total = Total Cannabinoids - All the listed cannabinoids on the summary section, Total Detected Cannabinoids = Delta8-THC + Delta9-THC + Total CBN + CBT + Delta8-THCV + Total CBG + Total CBD + Total THCv + CBL + Total THC + Total CBC + Total CBDV + Delta10-THC + Total THC-O-Acetate, Analyte Details above show the Dry Weight Concentrations unless specified as 12% moisture concentration. (mg/ml) = Milligrams per Milliliter, LOQ = Limit of Quantitation, LOD = Limit of Detection, Dilution = Dilution Factor (ppb) = Parts per Billion, (%) = Percent, (cfu/g) = Colony Forming Unit per Gram (cfu/g) = Colony Forming Unit per Gram, LOD = Limit of Detection, (µg/g) = Microgram per Gram (ppm) = Parts per Million, (ppm) = (µg/g), (aw) = aw (area ratio) = Area Ratio, (mg/Kg) = Milligram per Kilogram, \*Measurement of Uncertainty = +/- 10%

This report shall not be reproduced, without written approval, from ACS Laboratory. The results of this report relate only to the material or product analyzed. Test results are confidential unless explicitly waived otherwise. Accredited by a third-party accrediting body as a competent testing laboratory pursuant to ISO/IEC 17025 of the International Organization for Standardization.